

The Parkville Frame Gallery's

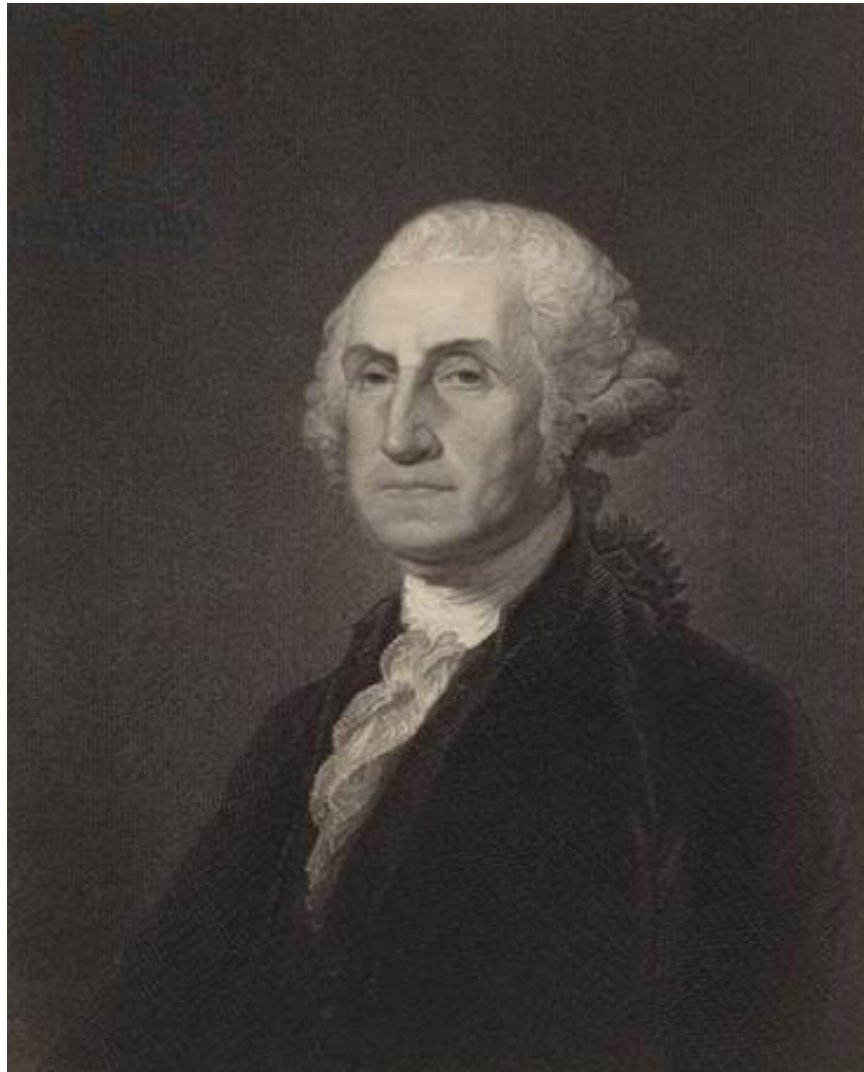
Top Picks

2023 September – October Edition
(Fall Edition)

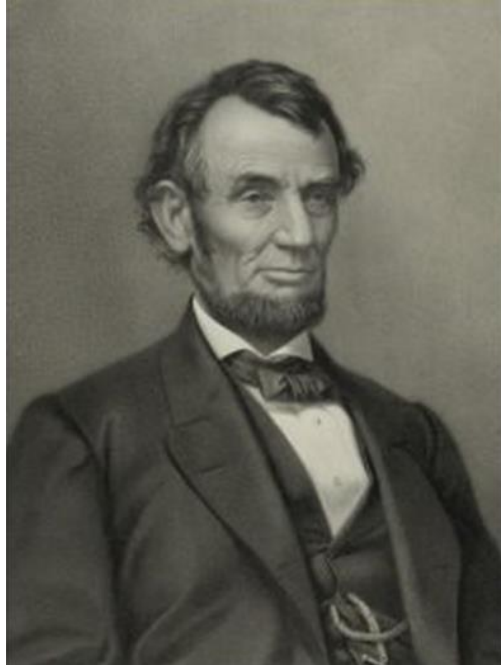
Note: It would be a good idea to contact us before placing your order with any of the vendors listed below. We may already have items available, either framed or unframed.

The Art Advisor

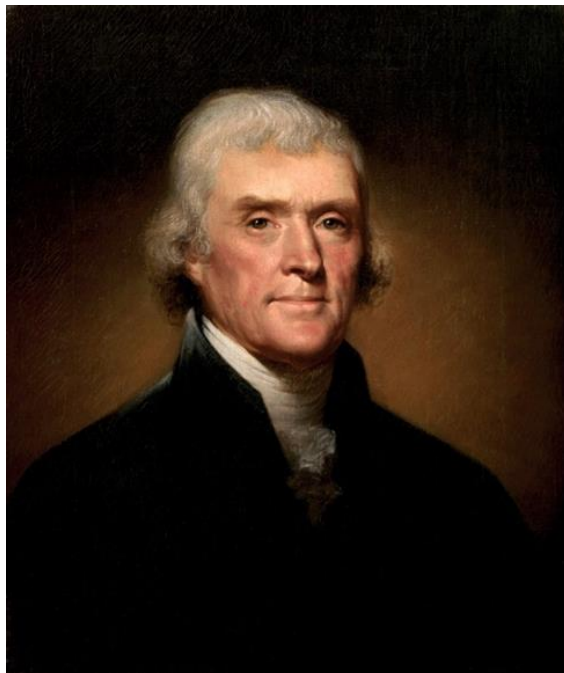
Click on the [text](#) below any image to go directly to a vendor's website.



Portrait of George Washington
Gilbert Stuart (American)

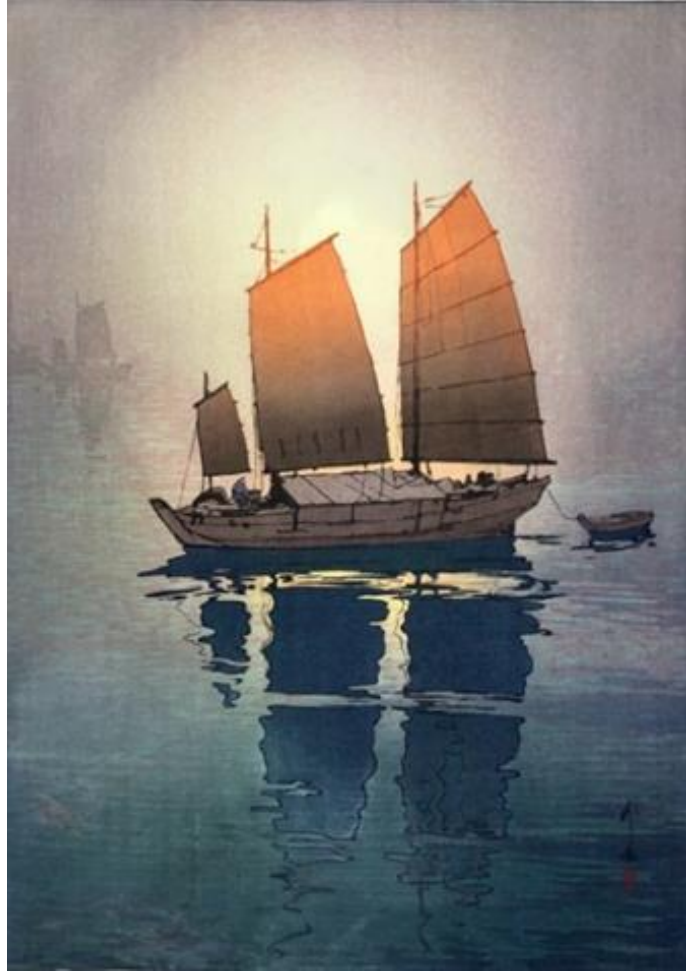


Portrait of Abraham Lincoln (ca. 1865)
Joseph E. Baker (American)
Library of Congress



Portrait of Thomas Jefferson (1800)
Rembrandt Peale (American)
The White House

[More Here](#)



Sailing Boats, Morning (1926)
From the Inland Sea Series (six paintings)
Hiroshi Yoshida (Japanese)

[More Here](#)

Other available options are shown below.



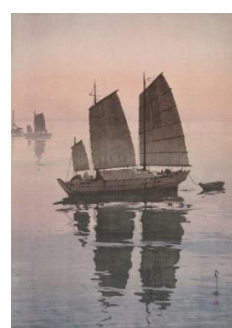
Forenoon



Afternoon



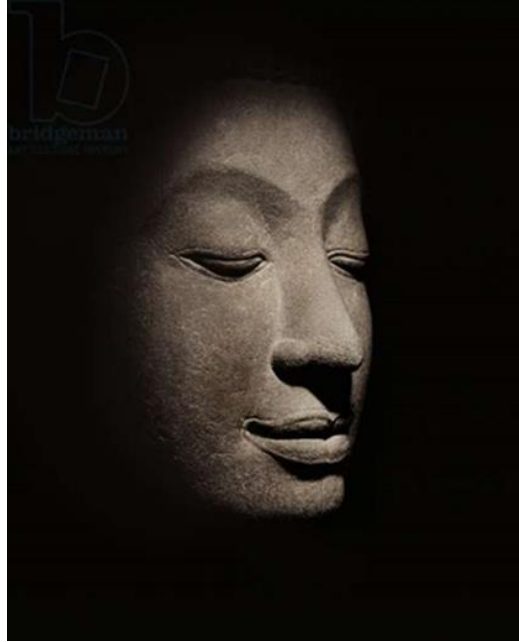
Mist



Evening



Night



Buddha head from the early Ayutthaya Period
Siamese School (14th Century)
Bangkok National Museum

[More Here](#)



Lotus Wall Flower

This is a small relief sculpture from Caproni Collections (Item #741).
Several different patina options are available.

[More Here](#)



Peony Hanging Scroll
Ryeon Heo (Korean)
Museum of Fine Arts Boston

[More Here](#)



Portrait of a Young Roman
William-Adolphe Bouguereau (French)
Suggested Frame: Larson Juhl Chateau Florentine, 2-1/4 inch, Gold (Item: 521912)

[More Here](#)



Quilcene Boy (1912)
Edward S. Custus (American)

[More Here](#)



Portrait of Willie Gee (1904)
Robert Henri (American)
Newark Museum of Art, Newark N.J.